

KEY FEATURES

- Designed for industrial and hazardous locations
- 100% field serviceable for components and sub assemblies
- Minimum CRI of 70
- Field angle adjustment with optional swivel mount
- Surface or Suspension mounting
- End-to-end wiring installation
- Multiple light output options to replace fluorescent fixtures
- -40 to +55°C operating range (See spec sheet for more details)
- IP66 vented enclosure eliminates pressure differentials for reliable sealing
- 0-10V Dimming 1%-100%
- IP66 vented enclosure eliminates pressure differentials for reliable sealing

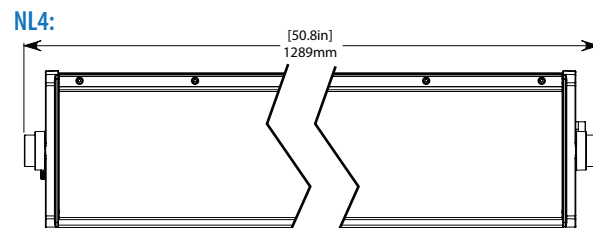
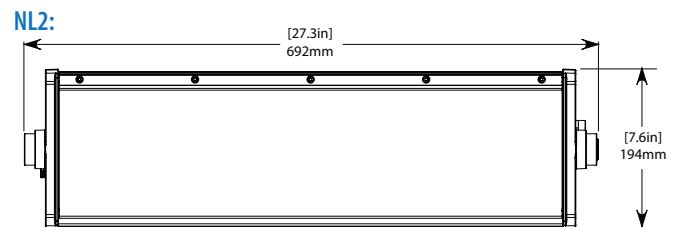
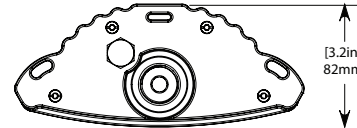


TECHNICAL SPECIFICATIONS

HOUSING	Powder Coated Aluminum
MOUNTING	SEE PAGE 3 FOR MOUNTING OPTIONS
INPUT VOLTAGE	AC & BB: 120-277 VAC HV: 347-480 VAC
RATED POWER	SEE PAGE 2 FOR DETAILS
RATED CURRENT	SEE PAGE 2 FOR DETAILS
CONNECTIONS	3/4 NPT, Both ends
TEMPERATURE RANGE	SEE PAGE 2 FOR DETAILS (Case ~30°C above ambient)
CERTIFICATIONS	Certified to UL 1598, UL 1598A & UL 8750; CSA 22.2 No. 250.0; CSA 22.2 No. 250.13
INGRESS PROTECTION	IP66 Suitable for wet locations. Marine Outside type (Salt water).
COLOUR TEMP RANGE	50: 5000K Special Order: 2700-6500K
CRI VALUE (MIN)	70
TOTAL LUMENS	SEE PAGE 2 FOR DETAILS
LUMEN MAINTENANCE	LM-80 > 60,600 hrs
WEIGHT	NL2: 5.3 kg (12 lb) NL4: 8.6 kg (19 lb)

* The ambient temperature during lifetime, lumen and chromaticity determination is 25° C ± 1° C

DIMENSIONS



WARRANTY

Five (5) year limited warranty to the original purchaser. The warranty covers defects in materials and workmanship under normal use and service.

For additional information see:
<http://www.nemalux.com/company/warranty-policy/>

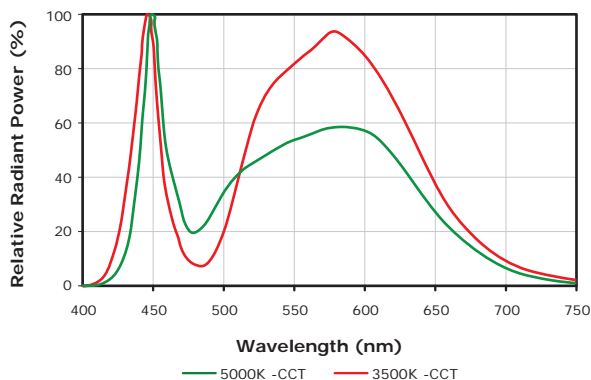
ELECTRICAL RATINGS

MODEL	INPUT VOLTAGE	RATED WATTAGE [Watts]	RATED VOLTAGE [Volts]	FREQUENCY [Hz]	AMBIENT TEMP. RANGE [°C]	TOTAL LUMENS
NL2S	AC	36	120-277	50/60	-40 to 50	3,970
	BB	36	120-277	50/60	-40 to 50	3,970
	HV	36	347-480	50/60	-40 to 50	3,970
NL2H	AC	52	120-277	50/60	-40 to 53	5,143
	BB	52	120-277	50/60	-40 to 50	5,143
	HV	52	347-480	50/60	-40 to 53	5,143
NL2X	AC	69	120-277	50/60	-40 to 50	7,965
	HV	69	347-480	50/60	-40 to 50	7,965
NL4S	AC	85	120-277	50/60	-40 to 50	8,697
	BB	85	120-277	50/60	-40 to 50	8,697
	HV	85	347-480	50/60	-40 to 50	8,697
NL4H	AC	105	120-277	50/60	-40 to 45	10,470
	HV	105	347-480	50/60	-40 to 45	10,470
NL4X	AC	135	120-277	50/60	-40 to 35	14,313
	HV	135	347-480	50/60	-40 to 35	14,313

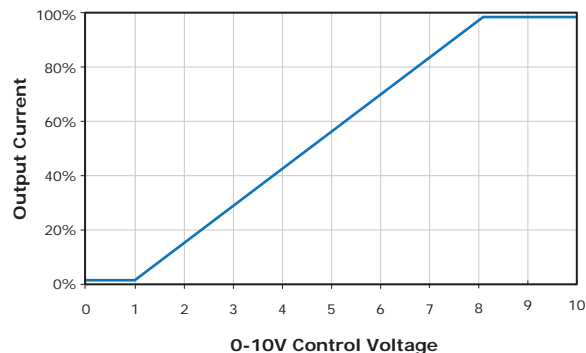
FIXTURE COMPARISON

Size: Length: Rating: Lamp Quantity: Est. Power: Est. Lumens LED Cross:	T12				T8				T5						
	4 foot		8 foot		4 foot		8 foot		4 foot		High Output				
	Standard	High Output	Standard	High Output	Standard	High Output	Standard	High Output	Standard	High Output	Standard	High Output			
Lamp Quantity:	2-Lamp	4-Lamp	2-Lamp	2-Lamp	2-Lamp	4-Lamp	6-Lamp	2-Lamp	2-Lamp	2-Lamp	2-Lamp	4-Lamp	6-Lamp	2-Lamp	4-Lamp
Est. Power:	74	133	158	237	62	112	184	86	112	153	59	118	117	120	240
Est. Lumens LED Cross:	3,200	6,400	6,000	8,100	3,200	6,400	8,600	4,300	8,800	9,100	3,200	6,400	9,600	6,600	13,200
Lumens															
NL2-S	3,970	X			X			X			X				
NL2-H	5,143		X												
NL2-X	7,965		X	X		X						X		X	
NL4-S	8,697		X	X		X	X		X			X		X	
NL4-H	10,470									X			X		
NL4-X	14,313														X

PHOTOMETRICS



DIMMING



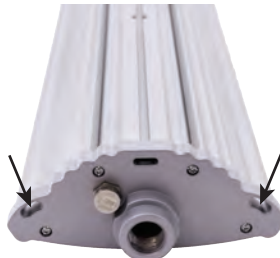
- Driver will source a maximum of 200uA for control needs
- Controller must sink current from the 0-10V control leads

MOUNTING OPTIONS (Ordered Separately)

SURFACE MOUNT (Optional)



SUSPENDED MOUNT



Two 6.5mm x 10 mm slots on each end for suspension hardware (not provided).

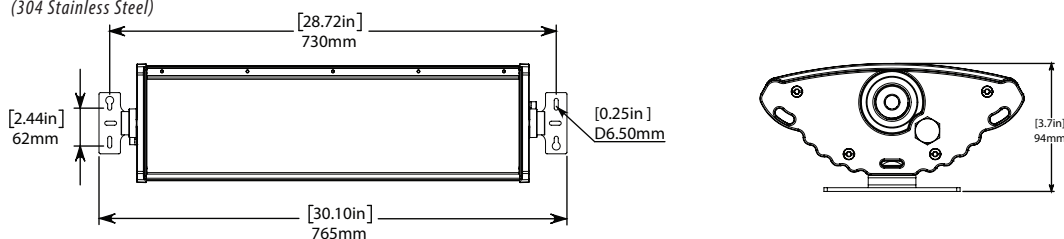
ANGLE ADJUSTABLE MOUNT (Optional)



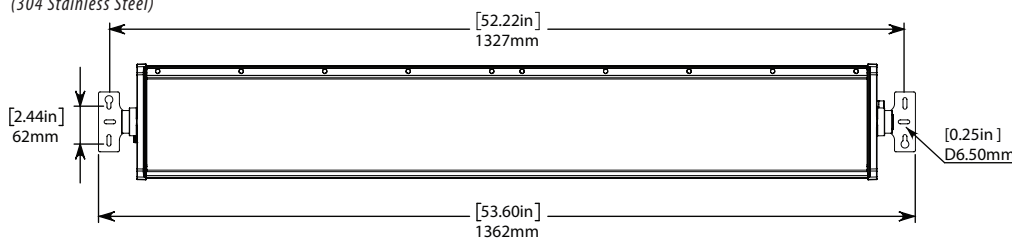
Easy field 360° angle adjustment with 3mm Hex Key.

MOUNTING DIMENSIONS

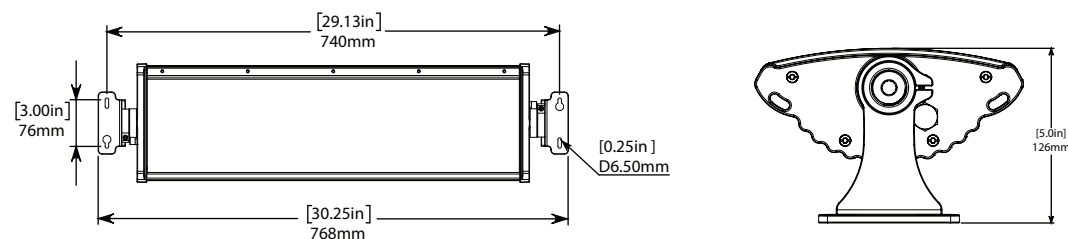
NL2 - SURFACE MOUNT : 5.3 kg | 12.0 lbs (Optional Accessory)
(304 Stainless Steel)



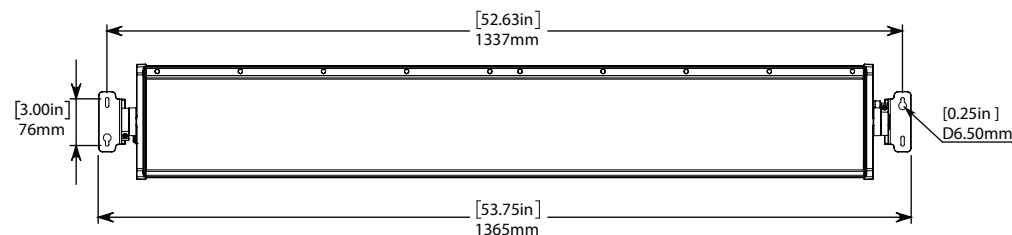
NL4 - SURFACE MOUNT : 8.6 kg | 19.0 lbs (Included Standard)
(304 Stainless Steel)



NL2 - ANGLE ADJUSTABLE MOUNT (NL-AM) : 5.3 kg | 12.0 lbs (Optional accessory)



NL4 - ANGLE ADJUSTABLE MOUNT (NL-AM) : 8.6 kg | 19.0 lbs (Optional accessory)



ORDERING INFORMATION

PROJECT NAME		TYPE
PROJECT LOCATION		
COMMENT		DATE
PREPARED BY		

MODEL SELECTOR

Sample Number: NL2-X-50-WC-GY-GN-AC

MODEL	OUTPUT	COLOUR	OPTIC	FINISH	LOCATION	POWER
NL2 NL4	S - Standard H - High Output ² X - Extra High Output ²	50 - Cool White (5000K) Special Order: 27 - 2700K ¹ 30 - 3000K ¹ 35 - 3500K ¹ 40 - 4000K ¹ 57 - 5700K ¹ 65 - 6500K ¹	WC - Wide Clear	GY - Grey Custom finishes available. Please contact for details. ¹	GN - General Location	AC - 120-277VAC BB - 120-277VAC ^{2,3} w/ Battery Back-up HV - 347-480VAC

ACCESSORIES (Order Separately)

Sample Number: NL-AM-GY

ACCESSORY	FINISH
NL-SM - Surface Mount NL-AM - Angle Adj. Mount	GY - Grey Custom finishes available. Please contact for details. ¹

NOTES:

- Minimum order quantities, additional costs and lead times may apply.
- Battery Backup (BB) not available on NL2-X, NL4-H, NL4-X.
- BB details – (Fulham FHS2-UNV-56S)
 - Input Current: 0.07 A
 - Input Wattage: 4 W
 - Recharge Time: 24 – 48 Hrs
 - Illumination time: 90 – 350 Min.