

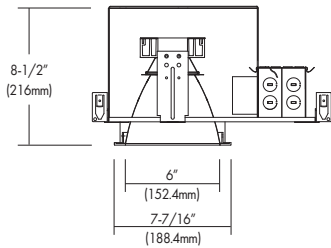


ICED666S, DLED666S

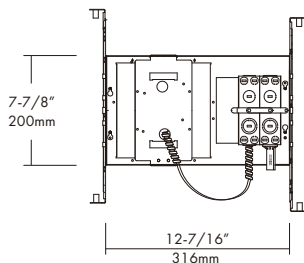
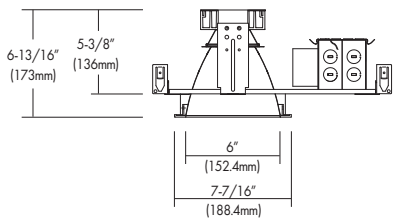
LED 6" IC and Non-IC, Square Architectural Downlight



ICED666S
[IC Rated Housing]



DLED666S
[Non-IC Rated Housing]



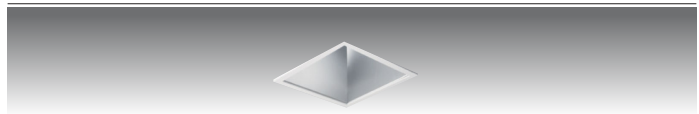
Ceiling Cut-out : 7"(178mm)SQ
Mounting Frame : 13-13/16"(335.7mm) x 7-7/8"(200mm)

Test Specification				
LED Quantity	1EA (COB)			
Input Voltage	120-277 VAC			
Wattage (+/-5%)	14W	23W	30W	45W
Lumen (+/-5%)	950	1,790	3,220	3,220
Efficacy (LPW) (+/-5%)	67.9	77.8	71.5	71.5
Luminaire Beam	43°	43°	43°	43°
CCT (Color +/-5%)	2700K, 3000K, 3500K, 4000K			
CRI (Typical)	80, 90			
Dimming	0~10V, ELV & TRIAC Optional Lutron Drivers			
LED Module	5 yr or 50K hr			
Environment	Damp Location & *optional Wet Location			

Design Features

- 20 gauge 6" x 6" square aperture housing adjusts ceilings up to 1-1/4" thick.
- Semi-matte diffuse lower reflectors under the upper reflector.
- 60° cutoff viewing angle of light source.
- Trims for straight downlight with flood lens.
- Light engine and driver can be replaceable through aperture below ceiling.
- Universal, 120~277V input, high efficacy drivers with dimming capability by
 - ① a Triac 120V low voltage electronic dimmer switches or
 - ② 0-10V, Triac & ELV dimmer switches.
- Optional Lutron Hi-lume A-Series, LED drivers and EcoSystem 5-Series LED drivers are available. Lutron drivers provide flicker-free, smooth, continuous dimming down to 1% for Hi-lume and 5% for EcoSystem. (Contact factory for dimming system requirements)
- Provided listed j-box and adjustable height and multiple channel brackets.

Trims : Various finishes available for straight (ST) down lights.



TML614SST
Upper Straight down reflector



ICED666S, DLED666S

6" Square Architectural Downlight

Ordering Information

Housing

ICED666S = IC Housing
 DLED666S = Non-IC Housing

-Watts

-14 = 14W
 -23 = 23W
 -30 = 30W
 -45 = 45W

-CRI

-8 = 80
 -9 = 90

Color Temp.**

27 = 2700K
 30 = 3000K
 35 = 3500K
 40 = 4000K

Driver*

UZTD = 0-10V, ELV & Triac dimmable
 (Dimming range varies 1~10%)
 L1D = Lutron Hi-lume 1% dimming
 LSD = Lutron EcoSystem 5% dimming
 LTE = Lutron Hi-lume 1% 2-Wire dimming

*Option: Emergency

-EM = Emergency Battery Backup with
 Remote Test Switch

Trim/LED Kit*

TML614SST = Straight

*Option: Sealed Lens

-WRL = Wet Location

-Finishes**

Reflector:

-WH = White
 -HC = Haze Clear
 -BK = Black

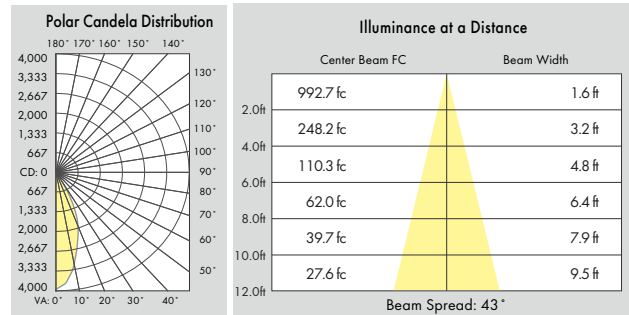
Trim:

-WH = White
 -BK = Black

** Consult factory for other Color Temperatures and Finishes

PHOTOMETRIC REPORT*

* Contact Factory for IES File



[TML614SST-30-830]