



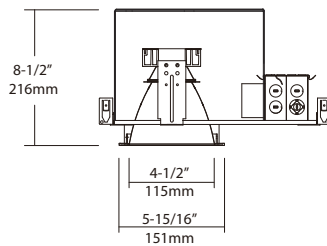
ICED466S, DLED466S

LED 4.5" IC and Non-IC, Square Architectural Downlight

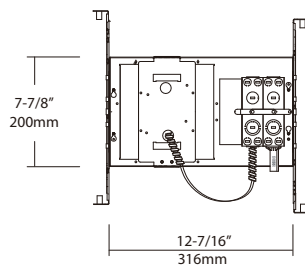
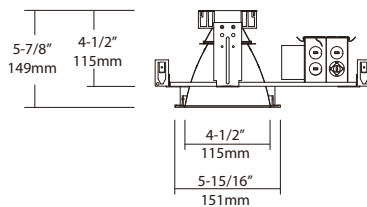


Test Specification			
LED Quantity	1EA (COB)		
Input Voltage	120-277 VAC		
Wattage (+/-5%)	14W	23W	30W
Lumen (+/-5%)	941	1,515	2,014
Efficacy (LPW) (+/-5%)	67.2	65.9	67.1
Luminaire Beam	54°	54°	54°
CCT (Color +/-5%)	2700K, 3000K, 3500K, 4000K		
CRI (Typical)	80, 90		
Dimming	0~10V, ELV & TRIAC Optional Lutron Drivers		
LED Module	5 yr or 50K hr		
Environment	Damp Location & *optional Wet Location		

ICED466S
[IC Rated Housing]



DLED466S
[Non-IC Rated Housing]



Ceiling Cut-out : 5-1/2" x 5-1/2" (140x140mm)

Design Features

- 20 gauge 4.5" x 4.5" square aperture housing adjusts ceilings up to 1-1/4" thick.
- Semi-matte diffuse lower reflectors under the upper reflector.
- 60° cutoff to light source.
- Multiple Trim options available.
- Light engine and driver can be replaceable through aperture below ceiling.
- Universal, 120~277V input, high efficacy drivers with dimming capability by
 - ① a Triac 120V low voltage electronic dimmer switches or
 - ② 0-10V, Triac & ELV dimmer switches.
- Provided listed j-box and adjustable height and multiple channel brackets.
- Optional Lutron Hi-lume A-Series, LED drivers and EcoSystem 5-Series LED drivers are available. Lutron drivers provide flicker-free, smooth, continuous dimming down to 1% for Hi-lume and 5% for EcoSystem. (Contact factory for dimming system requirements)

Trims





ICED466S, DLED466S

4.5" Square Architectural Downlight

Ordering Information

Housing

ICED466S = IC Housing
 DLED466S = Non-IC Housing

-Watts

-14 = 14W
 -23 = 23W
 -30 = 30W

-CRI

-8 = 80
 -9 = 90

Color Temp.**

27 = 2700K
 30 = 3000K
 35 = 3500K
 40 = 4000K

Driver*

UZTD = 0-10V, ELV & Triac dimmable
 (Dimming range varies 1-10%)
 L1D = Lutron Hi-lume 1% dimming
 LSD = Lutron EcoSystem 5% dimming
 LTE = Lutron Hi-lume 1% 2-Wire dimming

*Option: Emergency

-EM = Emergency Battery Backup with
 Remote Test Switch

Trim/LED Kit*

QT522
 QT529
 QT535R
 QT538

-Finishes**

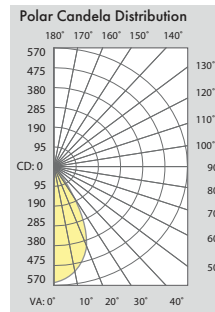
Reflector:
 -HC = Haze Clear

Trim:
 -WH = White

** Consult factory for other Color Temperatures and Finishes

PHOTOMETRIC REPORT*

* Contact Factory for IES File



	Center Beam FC	Beam Width
2.0ft	656.4 fc	2.0 ft
4.0ft	164.1 fc	4.0 ft
6.0ft	72.9 fc	6.0 ft
8.0ft	41.0 fc	8.0 ft
10.0ft	26.3 fc	10.0 ft
12.0ft	18.2 fc	12.0 ft

Beam Spread: 54°