

TUBE

Design by Ichiro Iwasaki.

Reference

6115.

Application

Ceiling Fixtures

Installation type

Surface mounted

Description

Ceiling lamp with three shades of different sizes. Featuring a curved sheet aluminum shade lending a visual and material lightweight quality.

Diffuser

Polycarbonate diffuser

Materials

LED support: Aluminum

Canopy: Steel

Finishes

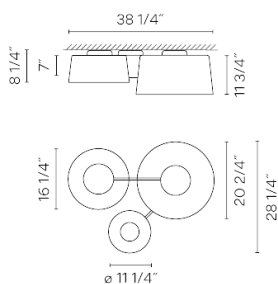


6115-10 White (Tube NCS S 0300-N)



6115-71 Grey L2, Grey M1, Grey D1 (NCS S 2500-N, S 4500-N, S 7000-N)

Sketch



Electrical characteristics

2 x LED PLATE 20W 700mA

AND

1 x LED PLATE 13.5W 700mA

AND

1 x LED PLATE 13.5W 700mA

AND

2 x LED PLATE 20W 700mA



Total 107.0 W



VIBIA



Light source: 2700K CRI >90 7540 lm 138 lm/W

Fixture: 3045 lm 0 lm/W

Driver included: CC - Constant Current 700 mA 120-277V 50/60Hz

Electronic dimming: 0-10V

Optional dimming: DALI or Lutron ECO

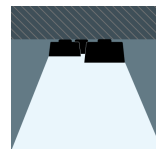
Installation and assembly

Please see the installation manual

Light distribution

General lighting

Lamp for general lighting that equally distributes the light in all directions.



Photometric data

Efficiency : 47.17 lm/W

Coordinate system : CG

Total flux : 3045.25 lm

Maximum value : 1188.20 cd

Light position : C=0.00 G=0.00

Symmetry on the planes : Double symmetrical

Isolux : Floor

Light position :

X=0.00m Y=0.00m Z=2.50m

Certificates

